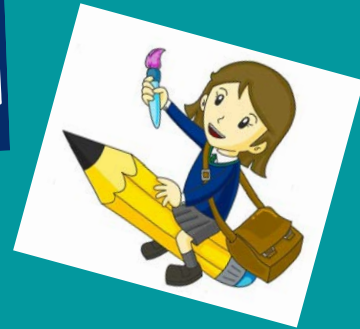




LUNT'S HEATH

News



Friday 8th September 2023

“It has been lovely to see the children return to school refreshed and ready to learn again! For our new Reception children, they have

settled into school so well! I visited their new outdoor area this week several times and they really are the envy of the school! As ever, we shall be sending information out regularly to ensure we keep you up to date with all the exciting goings-on here at Lunt's Heath. Enjoy the weekend!”

Mr D Paton, Headteacher

PTFA MEETING

THERE WILL BE A PTA MEETING ON MONDAY 18TH SEPTEMBER AT 5.30PM, IN MR HAWKINS CLASSROOM (3L) = CLASSROOM NEXT TO THE SCHOOL OFFICE AT THE FRONT OF THE SCHOOL. NEW MEMBERS ARE WELCOMED AND ENCOURAGED, INCLUDING RELATIVES AND FAMILY FRIENDS OF CHILDREN ATTENDING OUR SCHOOL.

ON WEDNESDAY 20TH SEPTEMBER IN THE SCHOOL HALL THE PTA WILL BE HOLDING A WELCOME SESSION FOR ALL PARENTS FOR THEM TO GET TO KNOW EACH OTHER AND TO LEARN MORE ABOUT THE PTFA AND THEIR WORK. PLEASE DO NOT BRING CHILDREN ALONG TO THIS EVENT.

CLASS 5H - FRIDAY 15TH SEPTEMBER - BLUE PETER

THE CHILDREN IN CLASS 5H WILL BE LEAVING SCHOOL AT 7.30AM ON FRIDAY 15TH SEPTEMBER TO TRAVEL TO SALFORD QUAY TO BE PART OF A PRE-RECORDING OF BLUE PETER. THE SHOW WILL GO OUT ON THE CBBC CHANNEL AT 17:00-17:30 ON FRIDAY 22ND SEPTEMBER. IT WILL ALSO BE FOUND IN IPLAYER AFTERWARDS FOR AT LEAST A MONTH FOR THE CHILDREN TO WATCH.

PARENTS PLEASE REFER TO AN EMAIL YOU WERE SENT TODAY REGARDING REQUIREMENTS FOR WHAT THE CHILDREN SHOULD WEAR. THEY WILL REQUIRE A PACKED LUNCH IN A DISPOSABLE CARRIER BAG WITH THEIR NAME ON. PLEASE RETURN THE AUDIENCE PARTICIPATION LETTER TO SCHOOL ON MONDAY TO BE SENT TO THE BBC AND MAKE SURE YOU HAVE COMPLETED THE EVOLVE.

AFTER SCHOOL CLUBS

We apologise for the issues on Wednesday night with the after school booking system, the company we use was undergoing maintenance and therefore the scheduled class update did not occur. Any child that applied for a place at our after school clubs has been allocated an available place at that club. **We still have some remaining places at some clubs, so have re-opened the booking system so you can book a 2nd club for your child if that club has places until Monday 11th September at 9am.** EYFS do not attend after school clubs as we feel the day is currently long enough for them as they settle into school life.

EVOLVE FORMS - SCHOOL TRIPS

During the Summer Holidays you were sent a number of Evolve Forms to gain permission for forthcoming trips we are providing for your child's year group between now and December. Please complete the Evolve forms to provide or decline permission for the trips and then make the relevant payments using the school gateway system. These trips have been sent in advance to allow you to see what is on offer throughout the year and to pay in instalments for the trips. Please see the dates list included in the newsletter or on the school website for trips that we have coming up. You have also been sent a permission evolve referring to class permissions e.g. photographs, medication, etc.

We have resent all of the consent forms this week so they should be in your email box. We would appreciate you taking the time to complete them as soon as possible.

REMINDERS - UNIFORM, SCHOOL BELONGINGS AND SNACKS

The children have looked very smart on their return to school in their new uniforms. We would just like to take the opportunity to remind you of a couple of things that we are noticing the children have forgotten. If the children are wearing a white school shirt rather than a summer polo shirt this should be with their school tie. Please make sure the children are wearing black school shoes when wearing their uniform, only wearing trainers on PE days. Hair accessories should be in the school colours of blue, green or black. The children should not be wearing any bracelets or necklaces to school as jewellery other than watches or earrings is not permitted. Earrings should be plain gold or silver studs - no patterns, shapes or gem stones. Please do not wear earrings on PE days, if they cannot be removed then please cover them with plasters for safety. The children do not need to bring their own equipment into school, this is provided so their own pencil cases can stay at home for them to use there. If your child is riding their bike to and from school please make sure they are wearing a helmet for safety. EYFS + KS1 children are provided with fruit for their breaktime snack but KS2 will need to bring their own fruit. On Friday the children can bring a treat snack but this should be a small packet of crisps or a biscuit e.g. Kit Kat. Please do not send sharing bags or sweets. We are a NUT FREE SCHOOL so any product you send CANNOT CONTAIN NUTS. Thank you for your co-operation.

EYFS - SNACKS AND TAPESTRY

EYFS now has a small kitchen area in the corridor. Therefore they are going to start offering a range of snacks to the EYFS children to help them develop their independence in preparing the snacks, eating with cutlery correctly, washing and drying up and developing their social skills at mealtimes. To cover the cost of the items provided in this snack time we are asking EYFS parents to contribute £6 per child for the Autumn Term (Sept-Dec). This payment can be made using the school gateway system and will allow us to provide your children with a wider range of life experiences. Many of you have now activated your tapestry account. Please ensure that the permission forms are returned to school so you can receive an activation email. Please speak to the EYFS staff if you have any issues with how to use this programme.

AUTUMN DATES

AUTUMN 1ST HALF TERM

WEDNESDAY 13TH SEPTEMBER = CLASS 3L – SWIMMING LESSONS

FRIDAY 15TH SEPTEMBER = 8AM - 12.30PM = CLASS 5H – TRIP TO BLUE PETER

TUESDAY 19TH SEPTEMBER = CLASS 6H LOCAL AREA WALK WIDNES TOWN CENTRE

WEDNESDAY 20TH SEPTEMBER = 6PM – 7PM = PTFA WELCOME MEETING FOR NEW MEMBERS AND NEW EYFS PARENTS

WEDNESDAY 20TH SEPTEMBER = CLASS 3L – SWIMMING LESSONS

THURSDAY 21ST SEPTEMBER = CLASS 6L LOCAL AREA WALK WIDNES TOWN CENTRE

FRIDAY 22ND SEPTEMBER = YEAR 3 = TRIP TO CHESTER ZOO

MONDAY 25TH SEPTEMBER = 9 – 11.30AM = CLASS 4H = BIBLE TALES WORKSHOP

MONDAY 25TH SEPTEMBER = 1.00 – 3.00PM = CLASS 4L = BIBLE TALES WORKSHOP

WEDNESDAY 27TH SEPTEMBER = CLASS 3L – SWIMMING LESSONS

THURSDAY 28TH SEPTEMBER = EUROPEAN LANGUAGES DAY

THURSDAY 28TH SEPTEMBER = CLASS 3H SPACE CAMP SLEEPOVER
(IN THE SCHOOL HALL)

FRIDAY 29TH SEPTEMBER = 10AM = CLASS 3H SPACE CAMP ASSEMBLY FOR PARENTS
(FOLLOWING THE ASSEMBLY THE CHILDREN IN CLASS 3H
WILL BE TAKEN HOME BY PARENTS)

FRIDAY 29TH SEPTEMBER = 2.30PM = CLASS 6H ASSEMBLY (PARENTS INVITED)

MONDAY 2ND OCTOBER = 1PM = EYFS ZOOLAB WORKSHOP

MONDAY 2ND OCTOBER = 1.30PM = GRANDPARENTS TOYS FROM THE PAST SESSION
(SCHOOL HALL)

TUESDAY 3RD OCTOBER = DYSLEXIA AWARENESS DAY

TUESDAY 3RD OCTOBER = 3.30PM – 6.30PM =

PARENTS' CONSULTATION EVENING = YEAR 1 – YEAR 6

WEDNESDAY 4TH OCTOBER = CLASS 3L – SWIMMING LESSONS

THURSDAY 5TH OCTOBER = 3.30PM – 6.30PM =

PARENTS' CONSULTATION EVENING = YEAR 1 – YEAR 6

TUESDAY 10TH OCTOBER = WORLD MENTAL HEALTH DAY

TUESDAY 10TH OCTOBER = 9.15-10.45AM = CLASS 4H LOCAL AREA WALK

TUESDAY 10TH OCTOBER = 1.30 – 3PM = CLASS 4H LOCAL AREA WALK

WEDNESDAY 11TH OCTOBER = CLASS 3L – SWIMMING LESSONS

THURSDAY 12TH OCTOBER = CLASS 3L SPACE CAMP SLEEPOVER IN THE SCHOOL
HALL

FRIDAY 13TH OCTOBER = 10AM = CLASS 3L SPACE CAMP ASSEMBLY FOR PARENTS
(FOLLOWING THE ASSEMBLY THE CHILDREN IN CLASS 3H
WILL BE TAKEN HOME BY PARENTS)

FRIDAY 13TH OCTOBER = 2.30PM = CLASS 5H ASSEMBLY (PARENTS INVITED)

MONDAY 16TH OCTOBER = ADHD AWARENESS DAY

MONDAY 16TH OCTOBER = 9.00 – 11.30AM = CLASS 2H HINDUISM WORKSHOP

MONDAY 16TH OCTOBER = 12.30 – 3.00PM = CLASS 2L HINDUISM WORKSHOP

TUESDAY 17TH OCTOBER = 1.30PM – 3.00PM = NEW 2024 EYFS PARENTS OPEN
AFTERNOON

WEDNESDAY 18TH OCTOBER = CLASS 3L – SWIMMING LESSONS

WEDNESDAY 18TH OCTOBER = CLASS 5H = CHEMISTRY WITH CABBAGE

WEDNESDAY 18TH OCTOBER = 1.30PM – 3.00PM = NEW 2024 EYFS PARENTS OPEN
AFTERNOON

WEDNESDAY 18TH OCTOBER = 5PM = NEW 2024 EYFS PARENTS MEETING

THURSDAY 19TH OCTOBER = CLASS 5L = CHEMISTRY WITH CABBAGE

THURSDAY 19TH OCTOBER = INDIVIDUAL SCHOOL PHOTOGRAPHS

FRIDAY 20TH OCTOBER = 8AM - 12.30PM = CLASS 5L – TRIP TO BLUE PETER

MONDAY 23RD OCTOBER = STAMMERING AWARENESS DAY

TUESDAY 24TH OCTOBER = 3.30PM – 6.30PM = EYFS PARENTS' CONSULTATION
EVENING

WEDNESDAY 25TH OCTOBER = CLASS 3L – SWIMMING LESSONS

WEDNESDAY 25TH OCTOBER = YEAR 4 = ROMAN EXPERIENCE TRIP TO CHESTER

THURSDAY 26TH OCTOBER = INTRA SCHOOL HOUSE DAY = ENTERPRISING
FUNDRAISING

THURSDAY 26TH OCTOBER = 9.30AM = YEAR 3 HARVEST SERVICE AT ST LUKE'S
CHURCH

(YEAR 3/4 PARENTS INVITED)

THURSDAY 26TH OCTOBER = 3.30PM – 6.30PM = EYFS PARENTS' CONSULTATION
EVENING

FRIDAY 27TH OCTOBER = SCHOOL CLOSED FOR PUPILS (STAFF INSET DAY)

LUNT'S HEATH

School Dinner Menu

Please find below the School Dinner Menu for the Autumn Term 2023. It is vital that you book your child's school meal a week in advance, using the school gateway system. Please remember that from September School Meals will be £2.70 a day.

The rotation of school meals will be across 3 weeks next year. A pdf of the school meal option timetable will be attached to this email for you to print for your reference.

Below will be the menu for WC 11.09.23

		Week 2
Monday	Main	Pork & Carrot Meatballs (x4) 🍷 served with herby potatoes Vegan Sausage Roll 🌱 served with herby potatoes
	Vegetable	Spaghetti Hoops, Salad Bar
	Dessert	Ice Cream Roll, Fresh Fruit, Yoghurt
Tuesday	Main	Homemade Pasta Bolognese served with a homemade garlic triangle Homemade Cheese & Rice Flan 🌱 served with boiled potatoes
	Side	Sweetcorn & Peas, Salad Bar
	Dessert	Fruit Flapjack, Fresh Fruit
Wednesday	Main	Roast Gammon Dinner with Pineapple, Roast/Mash Potatoes & Gravy Quorn Sausage 🌱 served with Stuffing Balls, Roast/Mash Potatoes & Gravy
	Side	Carrots & Broccoli
	Dessert	Fruit Muffin, Fresh Fruit Mix
Thursday	Main	Deli Day selection of filled Wraps & Sandwiches served with oven baked potato wedges Filled Jacket Potatoes served with a side salad
	Side	Salad Bar
	Dessert	Melting Moment & Wedge of Fruit, Fresh Fruit
Friday	Main	MEAT FREE FRIDAYS Fish Stars (x2) or Non-Fried Salmon Fillet 🌱 served with chips Our Famous Homemade Margherita Pizza 🌱 served with chips
	Side	Mushy Peas, Salad Bar
	Dessert	Chocolate Ice Cream Tub, Fresh Fruit
		Week 2
		11/09 02/10 23/10 20/11 11/12 08/01 29/01 26/02 18/03 22/04 13/05 10/06 01/07

STARS OF THE HALF TERM

HEADTEACHER AWARD

EYFS / KS1 = Esther Bennett – continuing her brilliant work from last year

KS2 = Matthew Ellis – being so helpful towards his friends

Being in school, on time, is so important for children to continue their development. Our OTIS programme (On Time, In School) is designed to promote the importance of this. Even being 5 minutes late each day across a year equates to 15 hours lost learning. School has remained open from 8:35am to ensure that children can access easily. Our new Kids Space Out of Hours Club also provides opportunities, as well as the numerous private providers and childminders across the area.

OTIS AWARD WINNERS

Whole School Attendance target for 2023-2024 is 96%.

Last year was 95.4%

Attendance this week = 97.7%

Attendance winners this week

EYFS / KS1 = 2H, Miss Walters = 100%

KS2 = 4L, Mrs Kristensen = 100%

KEY STAGE 1

Class	Reason for award
RL	<i>Ambition - for working hard to settle into school life quickly and showing you know how to be true Lunt's Heathers already!</i>
	<i>Enterprise - for being adaptable and patient in learning all of the new routines involved in school life!</i>
RH	<i>Inner resilience - for completing your first full week in school, even though it was very tiring in the warm weather!</i>
	<i>Collaboration - for getting along beautifully with each other and making lots of new friends and getting to know your Reception adults.</i>
	<i>Understanding - for showing kindness to others and remembering <u>your</u> pleases and thank yous!</i>
1L	<i>Class 1L I have been impressed with the ambition that you have shown during your first week in Year 1. You have all used inner resilience when taking part in new activities and learning the routines within your new year group. I have seen how well you can listen to your chatty partners, share your ideas and been kind and caring towards each other. What a fantastic start to the year!</i>
1H	<i>1H, you have shown great ambition to complete our rainbow challenges during continuous provision this week. You have demonstrated wonderful understanding of how to be kind and caring friends. I have been so impressed watching you all show brilliant collaboration and not giving up even when things are a little tricky. Keep shining!</i>
2L	<i>What an incredible start to year 2! 2L have impressed me by showing ambition to be their best selves, displaying creativity with their ideas about our new story, showing inner resilience to not give up on trickier place value work, for collaborating with each other brilliantly and being understanding of each other's feelings.</i>
2H	<i>What a wonderful start to Year 2. You have all shown great ambition to be your best selves. Everybody has shown determination and resilience in everything they have done particularly when counting in maths. You have been creative in your ideas linked to our new text and are all excellent team players. This year is going to be amazing.</i>

STARS OF THE HALF TERM

KEY STAGE 2

Class	Reason for award
3L	<p><i>Ambition - you all have shown an ambitious attitude in year 3 so far - keep this going!</i></p> <p><i>Enterprise - you have already shown enterprising ways to work things out. Maths is a great example of this.</i></p> <p><i>Inner resilience - coming into Year 3 has been hard but you have made it look so easy and I am so proud of you for this.</i></p> <p><i>Collaboration -you work so well with <u>each other</u> and we have only just started our working relationship together. I can't wait to see how this year goes.</i></p> <p><i>Understanding- you not only understand what it means to be in Year 3 but what it means to be a year 3 at Lunt's Heath.</i></p>
3H	<p><i>Ambition: 3H have blown me away with their ambition to produce amazing presentation in all subjects this week. They are working hard on their letter formation and focusing on how to set out their work.</i></p> <p><i>Collaboration: 3H are super at using their collaboration skills in all aspects of our curriculum. They have shown how much they support each other in each success and never let anyone feel left out.</i></p> <p><i>Enterprise: 3H are so creative at coming up with different ways to tackle maths problems, they have even given some new ideas to me!</i></p> <p><i>Inner resilience: In 3H we never give up when faced with a challenge. We tackle them together and feel super proud of ourselves when we have solved them.</i></p> <p><i>Understanding: 3H have understood what it means to be a true Lunt's Heath Superstar. They always listen, are kind to each other and respect everyone. What a great start!</i></p>
4L	<p><i>The whole of my 4L class have wowed me this week with their inner resilience by powering through their multiplications, they have shown ambition by being able to give definitions of tricky words in our English lessons. They have shown me their enterprising and collaboration skills through our PE lessons where they have worked in groups to create a dance routine! Every single child in my class has demonstrated their understanding by showing beautiful presentation and creative work in their books! What a fantastic start!</i></p>
4H	<p><i>4H have settled into year 4 brilliantly this week. They have proven their resilience by staying focused and on task in all subjects. They have shown ambition by telling me how they are going to succeed this year. Enterprising and collaboration skills have been proven through their amazing dance performances and as for working as a team, have all wowed me with their understanding of all new concepts that have been delivered to them.</i></p> <p><i>Thank you for making me feel so welcome.</i></p>
5L	<p><i>Class 5L have settled in well this week showing great enterprise in their work. I have been impressed by their no fear approach to learning and how ambitious they are with their ideas and methodologies. It has been amazing to see the children working together as a team to ensure that everyone achieves what they are capable of, and I look forward to us achieving great things this year.</i></p>
5H	<p><i>5H have been extremely welcoming to Miss Barrett this week. They have been demonstrating inner resilience in their learning making sure they apply their best selves to their work. They have been setting a great example to others showing ambition to be the best in the school! In English they have been working together to collaborate to expand our vocabulary and in Maths they have been enterprising new ways to show a number for example using number discs. Miss Barrett can't wait for the rest of the year!</i></p>
6L	<p><i>Ambition - You have all made a fantastic start to Year 6 going above and beyond to show that you are ready to lead our school. Keep it up!</i></p> <p><i>Enterprising - You have shown real initiative and drive during your first week in Y6 and have been fantastic role models for the other year groups.</i></p> <p><i>Inner Resilience - This week, you have thought about all the things that you want to achieve in your final year at LHPS and I know that you'll all be great.</i></p> <p><i>Collaboration - I've witnessed some lovely work this week both in pairs and in small groups. Keep working well as a team and you will go far!</i></p> <p><i>Understanding - Wow! What a start to our foundation subjects. I was amazed at how much you could already tell me about WW1 and WW2. You were all so excited and I cannot wait to delve further into the unit with you.</i></p>
6H	<p><i>I have had a fantastic week welcoming the new Team 6H. They have shown brilliant understanding and collaboration in their lessons, especially during our extended writing this week. I have been very impressed with the ambition to be the best in the school and their enterprising attitude to make this happen. During PSHE, we worked on our inner resilience to ensure nothing will stop us achieving our goals!</i></p>

LUNCHTIME STARS

EYFS = All children
 YEAR 1 = Frankie Littler
 YEAR 2 = Osian Lamkin
 YEAR 3 = Neave Street
 YEAR 4 = Oliver Lightfoot
 YEAR 5 = Luke Jackson
 YEAR 6 = Phoebe Darlington



TWITTER

Please follow your child's class teacher on their Twitter handle below for pictures of what the year group has been up to:

[@EYFSLuntsHeath](#)

[@Year 1LuntsHeath](#)

[@Year2LuntsHeath](#)

[@Year2LuntsHeath](#)

[@Year3LuntsHeath](#)

[@Year4LuntsHeath](#)

[@Year5LuntsHeath](#)

[@Year6LuntsHeath](#)

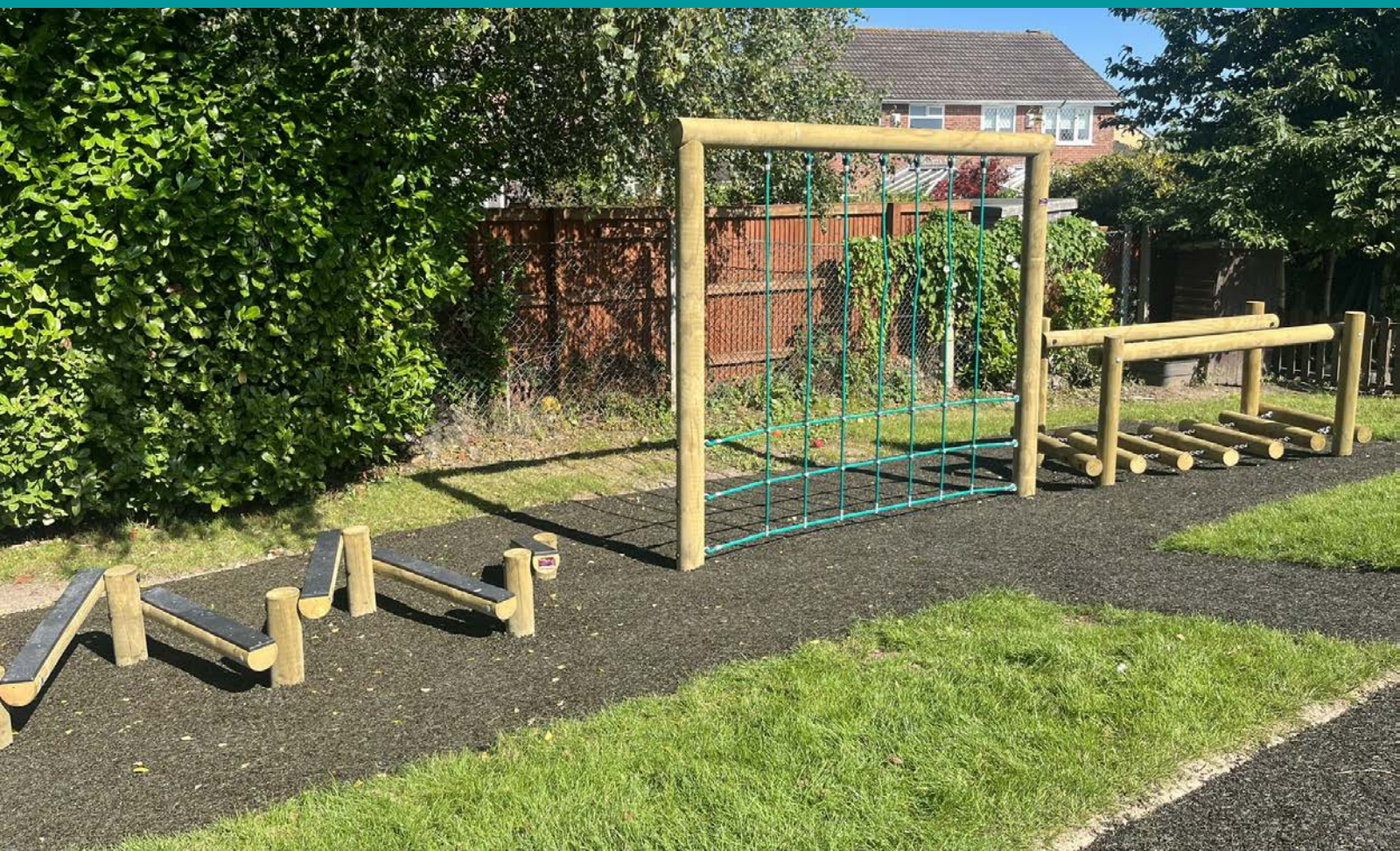


THIS WEEK

NEW CLASSES - EYFS



During the Summer holidays we have redeveloped our EYFS outside area. The children now have a new adventure playground, mud kitchen, role play areas and a track for the bikes and scooters.



THIS WEEK

NEW CLASSES

EYES



CLASS 1L + 1H



CLASS 1L + 1H



CLASS 2L + 2H



CLASS 3L + 3H



CLASS 4L + 4H



CLASS 5L + 5H



CLASS 6L + 6H



THIS WEEK

SCIENCE INVESTIGATION

Welcome scientists, we're back this term with our brilliant Marvin and Milo - Do Try This At Home scheme. Each week you will be sent two fantastic science investigations which you can complete over the weekend. We would love to see the results of your investigations so please tweet @year6luntsheath and your pictures will be featured in the following weeks' newsletter.

Happy investigating!

DO TRY THIS AT HOME

Featuring: **Marvin and Milo**

issue #35

Nice outfit Milo, but don't you know that blue, purple and yellow are the new black?

Draw a dot in the centre of the kitchen towel with a felt tip pen, black works well but you could experiment with other colours.

What you need: • Kitchen towels • Water • Non permanent coloured felt tip pens

Then add a few drops of water to the dot.

As the water spreads through the tissue, the coloured pigments that make up the ink separate out.

The differently coloured pigments are made up of molecules of different sizes and this means that the water can carry them different distances across the paper.

Vic Le Billon

DO TRY THIS AT HOME

Featuring: **Marvin and Milo**

issue #36

Watch me make this can roll across the table, with just a balloon!

Place the empty can on its side on a flat surface.

What you need: • A balloon • An empty pop can (aluminium cans are best)

Then rub the balloon really fast against your hair.

Hold the balloon close to the can. It will start rolling towards the balloon.

Slowly move the balloon away from the can and watch in amazement as the can follows the balloon.

When you rub the balloon against your hair, negative electrons build up on the balloon. This negative charge induces a positive charge on the can making it roll towards the balloon.

Vic Le Billon

Friends of Lunt's Heath Primary School



The New School Year

On the 20th September you will be able to drop in to school between 6pm and 7pm to find out more about what the PTA does and ask any questions or make suggestions. You'll be treated to hot drinks and cakes and you'll have the bonus of a break from the kids! If you can't attend but have family members who might like to find out more and how they could help, share the details with them and tell them to come along, we'd love to see them as we are open to all.

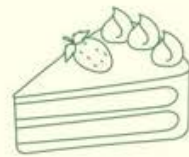
Friends of Lunt's Heath Primary School

PARENTS AND FAMILIES OF
LUNT'S HEATH STUDENTS NEW AND OLD
ARE INVITED TO A

Meet & Greet

WITH

**LUNT'S HEATH
PTFA**



PLEASE POP ALONG FOR
TEA/COFFEE & NIBBLES TO
MEET OUR PTFA AND FIND OUT
WHAT WE'RE ALL ABOUT

DROP IN BETWEEN 6-7PM
20TH SEPTEMBER 2023
LUNT'S HEATH SCHOOL

EMAIL: LUNTSHEATHPTA@YAHOO.COM TWITTER: @LUNTSHEATHPTA
FACEBOOK (GROUP): LUNTS HEATH PTA GROUP



MULTIPLICATION CHAMPION



TOP CLASS = CLASS 5H
TOP MATHEMATICIAN =
JACK ESHLIN 5H

Multiplication Challenge

Children in Year 4 need to complete a Multiplication Tables Check during the Summer 2nd Half Term.

Multiplication facts are needed in virtually all other areas of Mathematics therefore the more confidently children can recall these facts the easier they will find their Mathematics lessons as a barrier to learning is removed.

TO SUPPORT YEAR 4 IN THEIR QUEST TO RAPIDLY RECALL THEIR MULTIPLICATION FACTS WE WILL BE HOLDING A KS2 MULTIPLICATION CHALLENGE OVER THE NEXT THREE WEEKS.

PLEASE ENCOURAGE YOUR CHILD TO USE MATHS SHED ON A NIGHTLY BASIS TO PRACTICE THEIR MULTIPLICATION TABLES.

This can be found on Maths Shed. Click on Times Tables – your child can practice specific times tables that they do not know or attempt to improve their rapid recall by selecting Y4 MTC.

ON A FRIDAY WE WILL HAVE AN INDIVIDUAL WINNER FROM EACH CLASS FOR THE CHILD THAT HAS THE HIGHEST MATHS SHED SCORE AND A KS2 CLASS WINNER.

WE ARE SEARCHING FOR OUR KS2 MULTIPLICATION CHAMPION FOR KS2!

EdShed

Assignments

Games set for you.

View

Challenges

Challenge others to play.

View

Leagues

Player and class leagues.

View

Enter 6-digit free code to join game

Join

Spelling Shed

Play!

Phonics Shed

Play!

MathShed

Play!

QUIZSHED

Play!

MathShed

Number Skills

- Number Bonds
- Times Tables
- Powers of Ten
- Add & Subtract
- More

Quizzes and Lessons

- Stage 1
- Stage 2
- Stage 3
- Stage 4
- Stage 5
- Stage 6
- Stage 7
- Stage 8
- Stage 9
- Stage 10

Times Tables

Mixed Single Related Related + Decimals Year 4 MTC

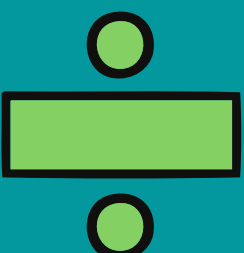
2 - 12s	x	+	÷
2s, 5s & 10s	x	+	÷
3s, 4s & 8s	x	+	÷
2s, 3s, 4s, 5s, 8s & 10s	x	+	÷
3s, 6s & 9s	x	+	÷
4s, 8s & 12s	x	+	÷
4s, 6s, 7s & 8s	x	+	÷
11s & 12s	x	+	÷

Times Tables

Mixed Single Related Related + Decimals Year 4 MTC

Year 4 Multiplication Tables Check

Year 4 MTC



1	3x2	3x3	3x4	3x5	3x6	3x7	3x8	3x9
1	4x2	4x3	4x4	4x5	4x6	4x7	4x8	4x9
1	5x2	5x3	5x4	5x5	5x6	5x7	5x8	5x9
1	6x2	6x3	6x4	6x5	6x6	6x7	6x8	6x9
1	7x2	7x3	7x4	7x5	7x6	7x7	7x8	7x9
1	8x2	8x3	8x4	8x5	8x6	8x7	8x8	8x9

TOP CLASS = CLASS 2L
TOP SPELLER =
POPPY HOUGHTON 2L

Spelling and Phonics Shed

Just a reminder that the Lunt's Heath PTA have funded a subscription for every child to not only Maths Shed but the platform which also includes Spelling and Phonics Shed.

During lockdown we have found that the children's spelling ability was greatly impacted as it was difficult to teach and test spellings virtually.

Spelling shed allows the children to practice their spellings for their age phase in a fun and interactive way through games.

Encourage your child to log into their account, select Spelling Shed or Phonics Shed. Choose their age phase and then they can choose the game type and level of challenge.

