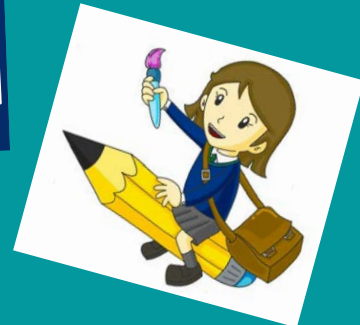




LUNT'S HEATH

News



Friday 10th March 2023

“This week has seen a real diverse set of experiences for the children in school. From Samba drumming to snow painting, from Year 6 organ studies to dance festival, they have really benefitted from a wide-ranging curriculum. Next week, we look forward to welcoming you into school to be part of our Mothers’ Day Cafes. Here, you’ll have an opportunity to make, create design cards for the special people in the children’s lives.

Enjoy the weekend!”

Mr. D Paton, Headteacher

MOTHERS’ DAY READING CAFE AND EYFS STAY AND PLAY

To mark Mothers' Day we will be holding a series of Mothers' Day Reading Cafes for the female figure in a child's life on the following dates below. You will be sent an email with further information about these events and an evolve to indicate whether or not you will be attending.

MONDAY 13TH MARCH = YEAR 5/6 AT 2PM

TUESDAY 14TH MARCH = YEAR 3/4 AT 2PM

WEDNESDAY 15TH MARCH = YEAR 1/2 AT 2PM

THURSDAY 16TH MARCH = EYFS STAY AND PLAY.

PTFA MEETING = MONDAY 13TH MARCH - 5.30PM

Parents and Friends of Lunt's Heath, please come and join us for our PTFA meeting at school on Monday 13th March. We have lots of forthcoming exciting events for the children to discuss and would appreciate help and support. You are not required to make any further commitment if you don't want to but we would love to hear your ideas.

Y1 WALKER ART GALLERY AND WORLD MUSEUM TRIP = TUESDAY 14TH MARCH

The children in Year 1 will be going on their school trip to the Walker Art Gallery and World Museum on Tuesday 14th March. The children should come to school at the normal time wearing full school uniform with school shoes. They will need a waterproof jacket and any medication needed during the day. Your child should bring a packed lunch in disposable paper/plastic bag clearly marked with your child’s name (unless you have requested a school packed lunch). They will return to school in time for the end of the school day as usual. Parent volunteers required have been contacted directly by your child's class teacher.

CROSS COUNTRY COMPETITION - TUESDAY 14TH MARCH

Selected children from Year 5 and 6 will be competing in the Widnes Cross Country Competition on Tuesday 14th March. The children should be taken to the event after school at St Peter and Paul Catholic High School to compete against other schools. The event will finish at 5pm. Wish us luck!

CROSS COUNTRY COMPETITION - TUESDAY 14TH MARCH

Some children in Year 6 will be going to watch Manchester City vs RB Leipzig on Tuesday 14th March. The children should bring a snack to have at school before leaving for the match at 4.30pm. They will return to school between 11pm and 12pm but parents will be messaged to be kept informed of the exact time.

BIKEABILITY - LEARN TO RIDE - YEAR 2 AND YEAR 1

The children in Year 2 and Year 1 are being given the opportunity to complete the Learn to ride aspect of the Bikeability programme. This will take place on the infant playground on their own bike or a balance bike if they do not yet know how to ride. Further information has been included in the Evolve you have been sent. Please complete this and return to school.

FORTHCOMING TRIPS

WEDNESDAY 22ND MARCH - YEAR 6 LIVERPOOL CATHEDRALS TRIP
THURSDAY 28TH MARCH - YEAR 4 = GATEWAY TO THE WORLD TRIP

SUMMER TERM MUSIC LESSON TUITION

Enrolment for music tuition starting after Easter is now open. If you are interested in learning Keyboard, Guitar or Ukulele then please contact Early Notes Music Education via website www.earlynotesmusic.education or email info@earlynotesmusic.education Places for the after school Rock/Pop band are also available.

CLASS 5H SPACE CAMP

The children in Class 5H have been invited to their Space Camp experience on Thursday 16th March. The children will do a range of Space themed activities during the day on Thursday, this will then continue into the evening, which will involve stargazing and a movie. The children will sleep over in the school hall. Following breakfast the following day they will share their activities with their parents at a 10am assembly on Friday.

Diary DATES

SPRING 2ND HALF TERM

SPRING 2ND HALF TERM

Monday 27th February – SCHOOL RE-OPENS (Staff and Pupils)

Tuesday 28th February = Spring Term Parent Consultation Meeting 3.30pm-6.30pm

Tuesday 28th February = Class 6H Tobacco Workshop 1.30pm

Thursday 2nd March – World Book Day

Thursday 2nd March = Spring Term Parent Consultation Meeting 3.30pm-6.30pm

Thursday 2nd March = Class 6L Tobacco Workshop 1.30pm

Thursday 2nd March = Year 4 Outdoor Learning (pm)

Friday 3rd March = Year 5 Crucial Crew 9.30-11.30am

Wednesday 8th March – EYFS Imagine That Trip

Thursday 9th March = Year 5/6 Girls' Football Cheshire Finals

Thursday 9th March = Year 4 Outdoor Learning (pm)

Friday 10th March – Class 2H Assembly 2.15pm-3pm

Monday 13th March – Y5/6 Mother's Day Reading Café

Tuesday 14th March – Year 3/4 Mother's Day Reading Café

Wednesday 15th March – Year 1/2 Mother's Day Reading Café

Thursday 16th March – EYFS Mother's Day Stay and Play

Thursday 16th March = Year 4 Outdoor Learning (pm)

Thursday 16th March – Friday 17th March – Class 5H Space Camp Residential

Friday 17th March – Class 5H Space Camp Assembly 10am

(Parents invited and then children will return home with them)

Friday 17th March = SECRET Mothers' Day Shop

Monday 20th March – Friday 24th March = Bikeability Learn to Ride (Year 2 – bikes required)

Tuesday 21st March = World Poetry Day

Wednesday 22nd March = Year 6 - Liverpool Cathedrals Trip

Thursday 23rd March = SEND Coffee morning = 9.30am

Thursday 23rd March – Friday 24th March – Class 5L Space Camp Residential

Thursday 23rd March = Year 4 Outdoor Learning (pm)

Friday 24th March – Class 5L Space Camp Assembly 10am

(Parents invited and then children will return home with them)

Friday 24th March = Class 2L Assembly 2.15pm-3pm

Monday 27th March – Friday 31st March = Y1 Balance Bikes (Bikes Provided)

Friday 31st March = Year 5 Easter Service 2.15pm-3pm

Friday 31st March = HOUSE Values Day

Monday 3rd April – Friday 14th April = SCHOOL CLOSED

NEW PE DAYS - SPRING 2

EYFS = Tuesday (Outdoor) / Thursday (Indoor)

YEAR 1 = Monday (Indoor) / Friday (Outdoor)

YEAR 2 = Monday (Outdoor) / Wednesday (Indoor)

YEAR 3 = Tuesday (Outdoor) 3H + 3L Swimming /
Thursday (Indoor)

YEAR 4 = Wednesday (Indoor) / Friday (Outdoor)

YEAR 5 = Monday (Outdoor) / Friday (Indoor)

YEAR 6 = Tuesday (Indoor) / Thursday (Outdoor)



Friends of Lunt's Heath
Primary School

It's time for the LH PTFA

Secret Present Shop

Children that have paid £2.50 on the gateway before Monday 13th March will be able to select a present for someone special from our secret shop that will be set up in school on 17.3.23. The presents will be wrapped so that they can keep them secret until Mother's Day.

Please note that we generally limit purchases to one per child. We appreciate that in some circumstances more may be needed. If you require two gifts please make two purchases but only where absolutely necessary. Please do this as soon as possible so we can ensure enough gifts are purchased.

GOT TO DANCE COMPETITION



Children from Key Stage Two took to the stage at the Parr Hall Warrington to compete in the 'Got to Dance' competition against a number of different primary schools. The children's performance was excellent and they all had a fantastic time. Well Done!



LUNT'S HEATH

School Dinner Menu

Please find below the School Dinner Menu for the WB 13.3.23. Please remember to pay for your child's school dinner a week in advance using the school gateway system.

	Monday	Tuesday	Wednesday
Main	MEET FREE MONDAYS  Tomato & Vegetable Pasta Bake Served with Garlic Bread  Cheese & Rice Flan served with Herbie potatoes	Bacon Brunch Bacon, Hash Browns, Omelette  Quorn Sausage Brunch Quorn Sausage, Hash Browns, Omelette	Traditional Turkey Roast Dinner served with Roast/Mash Potatoes & Gravy Roast Vegetarian Meatball Dinner served with Roast/Mash Potatoes &  Gravy
Side	Peas & Sweetcorn, Salad Bar	Baked Beans, Salad Bar	Carrots, Broccoli, Salad Bar
Dessert	Frank's Welsh Ice Cream tub , Cheese & Crackers, Fresh Fruit	Carrot Cake slice, Yoghurt, Fresh Fruit	Melting Moment with a wedge of Fruit, Yoghurt, Fresh Fruit

Thursday	Friday
DELI DAY Selection of Deli Sandwiches, Wraps & Baguettes served with Warm pasta salad  Filled Jacket Potato served with a side salad	Fillet Fish Fingers or Non-Fried Salmon Fillet served with chips  Margherita Pizza served with chips
Salad Bar	Mushy Peas, Salad Bar
Vanilla sponge & custard, Cheese & Crackers, Fresh Fruit	Chocolate Orange cookie with Orange wedge, Yoghurt, Fresh Fruit

EYFS Snacks

Just a reminder for the parents of children in Reception to pay the £6 for their child's snacks for next half term. This payment option has been set up on the School Gateway.

LUNCHTIME STARS

RECEPTION = Gia Ellison
 YEAR 1 = Freddie Coady
 YEAR 2 = Carter Dulson
 YEAR 3 = Elliot Hodgkinson
 YEAR 4 = Isabella Owen
 YEAR 5 = George Peacock
 YEAR 6 = Lucia Kelly

OTIS AWARD WINNERS

Attendance winners

Attendance since September = 95.2%
 Attendance this term = 96%

Attendance winners this week:

EYFS / KS1 = 97.9%, 1L, Mrs Worthington
 KS2 – 99.4%, 3L and 4H, Mr Hawkins and Miss McLindon

STARS OF THE HALF TERM

HEADTEACHER AWARD

EYFS / KS1 = George Farrow –
Brilliant throwing and catching skills in PE

KS2 – Sophia Doumptioti-Zacharopoulou –
Pride in her work consistently.

KEY STAGE 1

Class	Name of child	Reason for award
RL	<i>Esther Bennett</i> <i>Oscar Myhill</i>	<i>Curriculum – For doing so well with your phonics in school and wanting to practise writing independently at home too!</i> <i>Enterprising – For your very creative ideas in Drawing Club!</i>
RH	<i>Ezra Bailey</i> <i>Isabelle Fogg</i>	<i>Curriculum – fantastic use of non-standard and standard units when measuring in Maths.</i> <i>Enterprising – for showing imagination and resourcefulness in making her own rocket.</i>
1L	<i>Isaac Makin</i> <i>Abigail Owen</i>	<i>Curriculum – For being keen to share what he has learnt in science about the body’s senses.</i> <i>Enterprising – For sharing her ideas in lessons and making learning links.</i>
1H	<i>Isla Pearce</i> <i>Eddy Wang</i>	<i>Curriculum – For including fantastic adjectives in your writing this week!</i> <i>Enterprising – For expressing brilliant ideas in maths for how we can share amounts equally between friends!</i>
2L	<i>Jackson Thewlis</i> <i>Mason Dally</i>	<i>Curriculum – For always having a big smile on his face and showing kindness to others.</i> <i>Enterprising – For his creativity in poetry and Art this week.</i>
2H	<i>Joshua McDermott</i> <i>Maria Hatfield</i>	<i>Curriculum – For his enthusiasm and contributions in English this week.</i> <i>Enterprising – For showing creativity with shapes and patterns when making her African mask this week in Art.</i>

KEY STAGE 2

Class	Name of child	Reason for award
3L	<i>James Birchall</i> <i>Lucas Gibbons</i>	<i>Curriculum – For a noted effort in his work. Keep this up please.</i> <i>Enterprising – For having a great attitude to his work rate across the curriculum.</i>
3H	<i>Oliver Musker</i> <i>Emma Hainey</i>	<i>Curriculum - For having a fantastic attitude to learning and remaining really positive even when work gets complicated!</i> <i>Enterprising - For always creating something new and exciting for show and tell and having excellent knowledge on it.</i>
4L	<i>Harry Tran</i> <i>Oscar Caldwell</i>	<i>Curriculum – For producing detailed work through the week which resulted in a fantastic cereal bar.</i> <i>Enterprising –For considering all aspects of this week’s work to create well thought out cereal bar.</i>
4H	<i>Isabella Owens</i> <i>James Escosio</i>	<i>Curriculum – For showing extra initiative and challenging herself when responding to feedback.</i> <i>Enterprising –For producing focussed work throughout the week to create his own healthy cereal bar.</i>
5L	<i>Bobbie McCarthy</i> <i>Lydia Barber</i>	<i>Curriculum – For looking for opportunities to improve the features used in his writing.</i> <i>Enterprising – For showing great determination to problem solve in her Maths.</i>
5H	<i>Eric Nieto Gomez</i> <i>Emmie Donoghue</i>	<i>Curriculum – For creating a fantastic description of the Amazon Rainforest.</i> <i>Enterprising – For giving 100% to every lesson this week, working with quiet determination.</i>
6L	<i>Erin York</i> <i>Elisha Oosthuizen</i>	<i>Curriculum – For showing determination and never letting things get her down.</i> <i>Enterprising – For showing real resourcefulness and initiative in all aspects of her learning.</i>
6H	<i>Charlie Smith</i> <i>Eva Doran</i>	<i>Curriculum – For having a great attitude towards his work all week.</i> <i>Enterprising – For making brilliant revision notes to constantly improve her learning.</i>

EYFS Newsletter

The highlight of this week has definitely been our trip to Imagine That! We had a wonderfully busy day and the children behaved beautifully. We hope they have shared some of their best bits with you. Also a big thank you to those parents who volunteered to come along.

Can you see a star in the daytime?

Our Big Question this week has been 'Can you see a star in the daytime?' We have explored the difference between day and night and thought about all of the different activities we do during each. In continuous provision we have examined Van Gogh's 'Starry Night' painting and had a go at producing our own versions.



Mathematics

In Maths this week the children have been exploring measurement.

We started the week using non-standard units to measure before being introduced to the term 'centimetres' and had a go at using our own simple rulers to measure items using centimetres.

Phonics skills

The children have adapted well to their new phonics groups and are working hard. I know you will have discussed how best to support your child with their reading with their class teacher but please also see Tapestry for further updates.

EYFS Snacks

Just a reminder that now our new half term has started the £6 payment for this half term's children snack can now be paid on the School Gateway. This will allow us to continue to provide these to the children.

Mothers' Day - Stay and Play

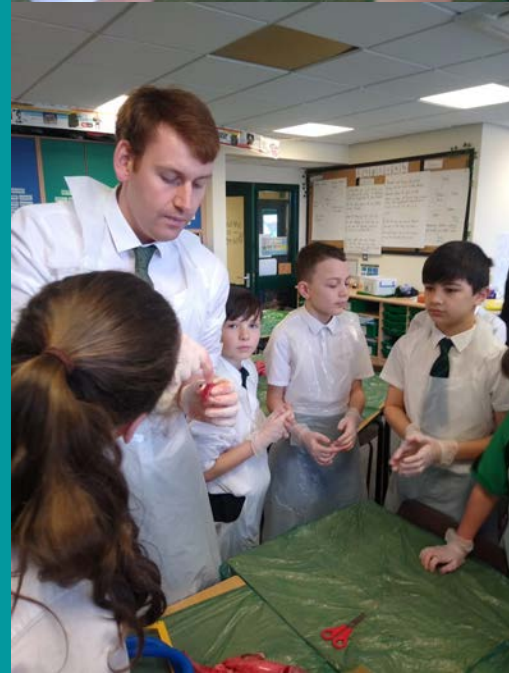
Next Thursday brings our Mother's Day Stay and Play session. Mums, Nans, Aunts are invited to come and join us from 2pm. Please just one adult per child.

Have a great weekend!

THIS WEEK

YEAR 6 - SCIENCE = HEART DISSECTION

To combine their English work on the text 'Pig Heart Boy' and their science work learning about the heart and circulation Year 6 dissected a heart in their science lessons this week. They identified the different parts and how they work.



THIS WEEK

YEAR 2 - ART = AFRICAN MASKS

Year 2 have enjoyed creating African masks in Art this week inspired by the artist Frank Marc.



THIS WEEK

YEAR 4-- D.T

Year 4 have designed and created their own cereal bars this week. All that is left is the taste test!

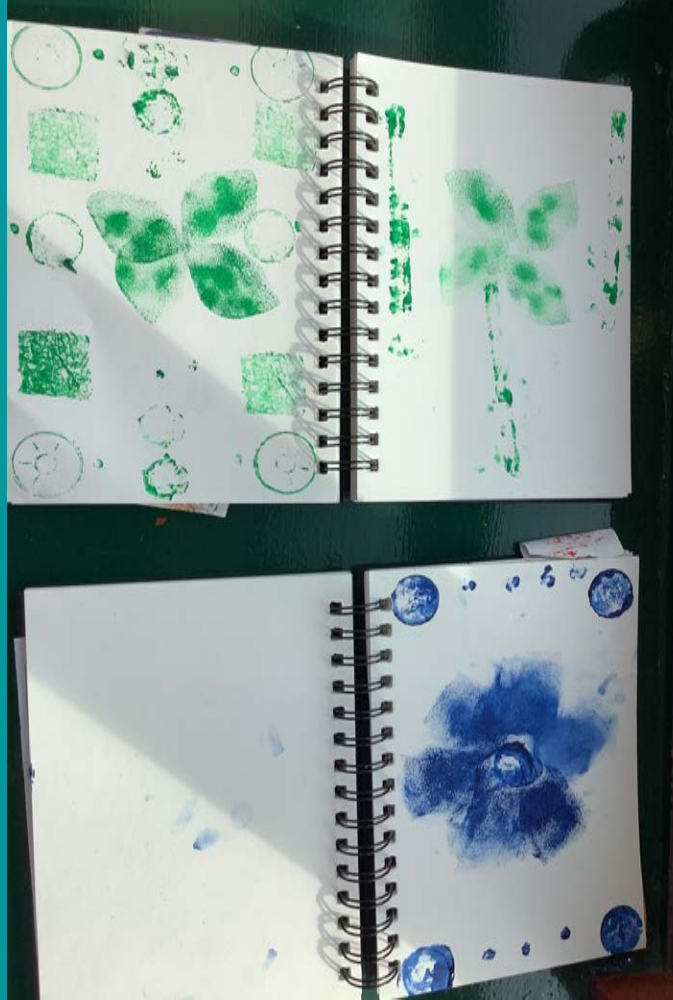
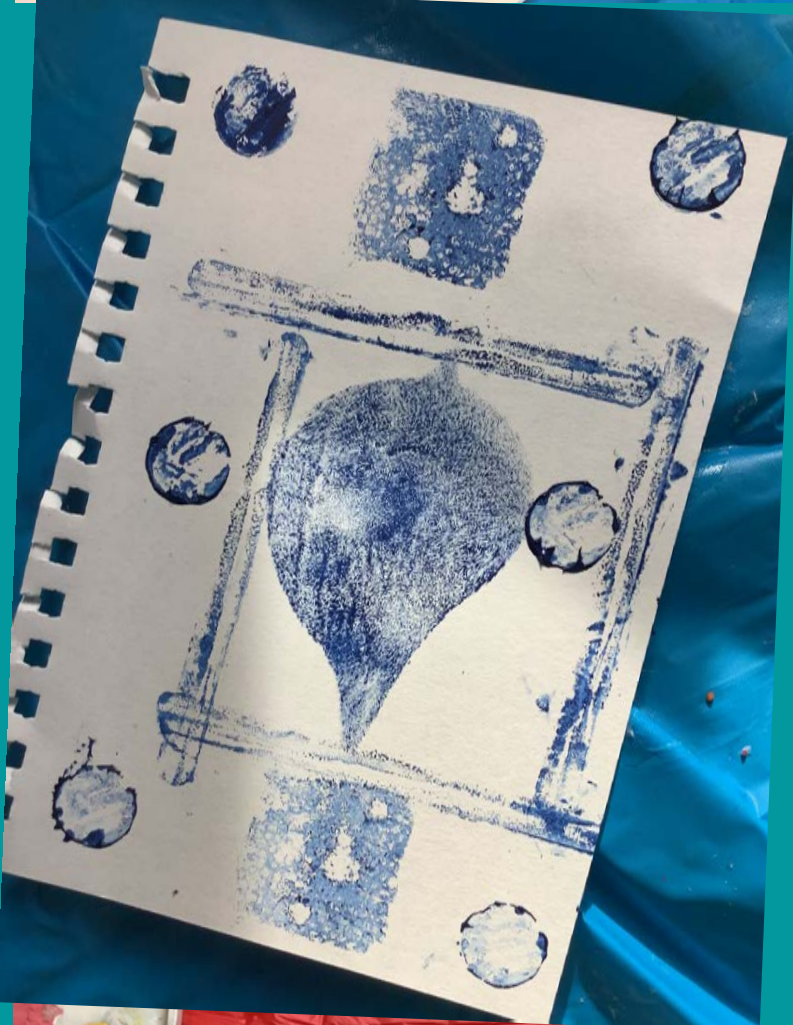


THIS WEEK

YEAR 1-- ART

'Discovery'

Printing with different printing tools and printing ink. The children used symmetry in their designs, inspired by the artist William Morris.



HOMework

Homework is a vital part of your child's learning giving them the chance to consolidate the knowledge and skills they have learnt in school. Moving forwards teachers will be using the Seesaw app (used during lockdown) in conjunction with Maths and Spelling Shed to set homework. Your child has their personal Seesaw and Maths/Spelling Shed log ins stuck into their homework diaries to allow them to access these sites. Homework will be set on a Tuesday each week. Please help your child to access both Seesaw and Ed Shed. If you have any issues logging in then please contact your child's class teacher directly and they will resolve this for you. Further information about EdShed can be found on the following pages



Guide for Families

Support Learning at Home

In 3 easy steps, create a supportive home learning environment for your child when they are prevented from going to school.

1

Get Seesaw on Your Home Device

On a tablet or mobile device, download the Seesaw [Class app](#)
On a web browser, bookmark app.seesaw.me

NOTE: The Seesaw Class app is different than the Seesaw Family app. Students use the Class app to learn at home. Check to make sure you download the right app.

2

Help Your Child to Sign In

Click 'I'm a Student'

Type the text code or scan the QR code provided by your child's school (Follow instructions at <https://seesaw.pub/signincode>)

Don't have a code? Your child may sign in with an email address or through Clever or ClassLink. Follow sign in instructions from your child's school.

3

Support Your Child to Complete Activities

In the Class app, click the  Activities tab to see assignments

Click  to complete an Activity

Click the  Check to submit work

Watch a Class app tutorial at <https://seesaw.pub/GSVideos>

Remote Learning FAQs for Families

Why isn't my child's sign in code working?

Check to make sure: 1) You are in the **Class app** or on app.seesaw.me, 2) You clicked 'I'm a Student', 3) You typed the sign in credentials without errors and/or are holding the QR code far enough away so the entire code is scanned. If you continue to encounter problems, reach out to your child's teacher.

Why does my child have multiple sign in codes?

Your child's teachers may be using the free version of Seesaw. Each code signs your child in to a different class. Your child needs to sign out each time they need to switch classes. We recommend hanging each code in your home learning space for easy access.

What can students do in the Class app?

Students can use Seesaw Learning Tools to post to their Journal, respond to Seesaw Activities, and see comments from their teacher. They should not be able to see other students' work while at home. If your child can see other students' work, please alert the teacher.

I have multiple children who need to use Seesaw. How can they share a device?

Your children will need to sign out each time they use Seesaw so the other can sign in. Print your child's sign in code or credentials and post them in your home learning space for easy access.

Why can't students just use the Family app at home?

The Family app is for families to see their child's work and communicate with the teacher. Students cannot respond to Activities or post to their Journals from the Family app. Students must use the Class app to learn at home.

How do I best support my child when learning from home?

Here are some student- and family-tested tips:

- + Create a distraction-free home learning space with your child:** Your child's focus is influenced by noise, conversation, electronics, and interest in the activity. Do your best to eliminate distractions.
- + Create a consistent routine for learning at home:** Routines make children feel safe, especially during times of change. Plan for 3-4 hours of learning time, since there are fewer transitions at home than there are in school. Make sure to build in time for movement, brain breaks, chores, and fun!
- + Know that you do not need to replace your child's teacher:** Provide encouragement, support, and positivity. Focus on your child's emotional health and relationships with others, and reach out to your child's teacher when your child needs academic support.
- + Look for learning moments in everyday life:** See the next page for ideas!



MULTIPLICATION CHAMPION



TOP CLASS = CLASS 2L
TOP MATHEMATICIAN =
YUVAN SUNIL 2L

Multiplication Challenge

Children in Year 4 need to complete a Multiplication Tables Check during the Summer 2nd Half Term.

Multiplication facts are needed in virtually all other areas of Mathematics therefore the more confidently children can recall these facts the easier they will find their Mathematics lessons as a barrier to learning is removed.

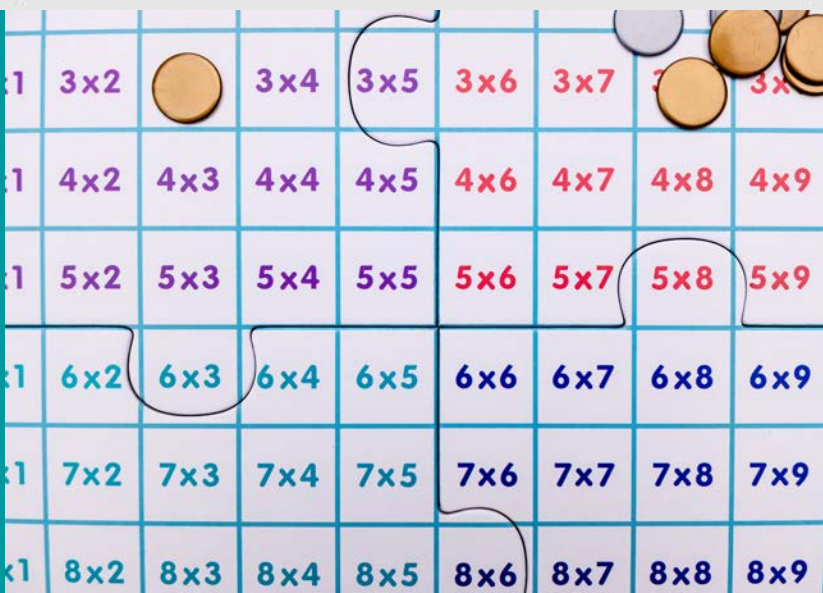
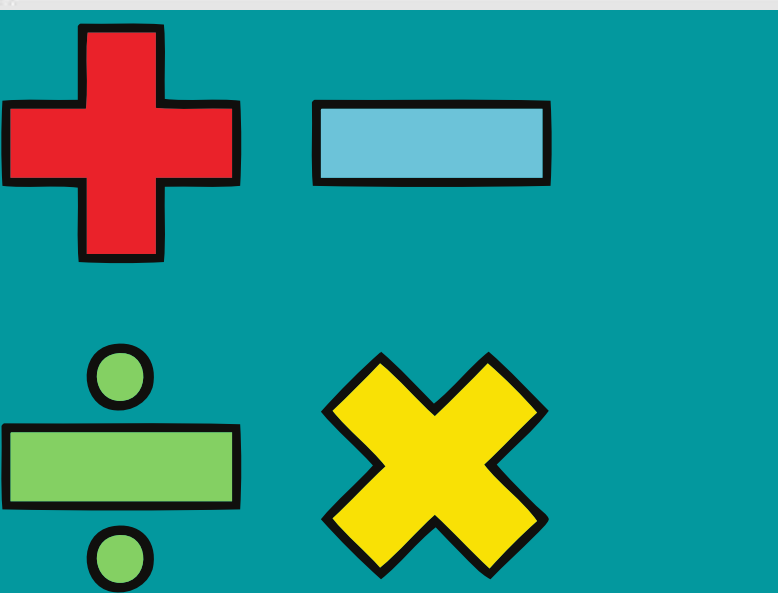
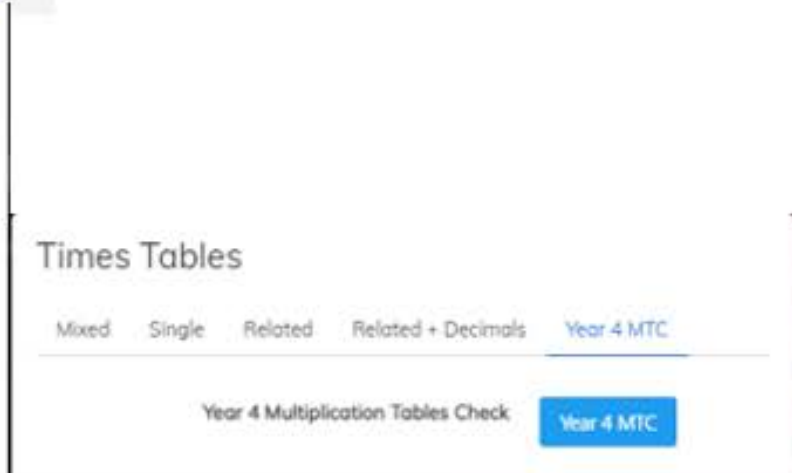
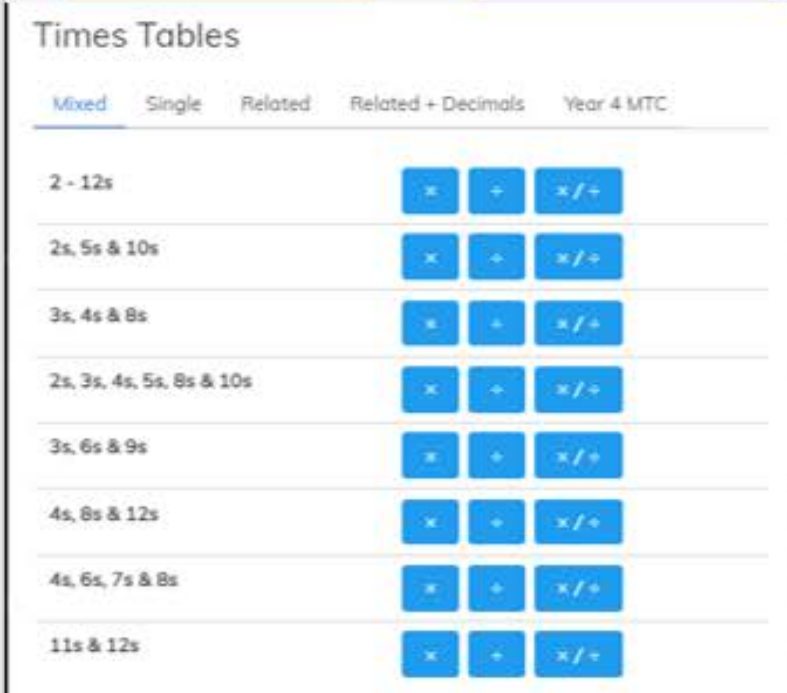
TO SUPPORT YEAR 4 IN THEIR QUEST TO RAPIDLY RECALL THEIR MULTIPLICATION FACTS WE WILL BE HOLDING A KS2 MULTIPLICATION CHALLENGE OVER THE NEXT THREE WEEKS.

PLEASE ENCOURAGE YOUR CHILD TO USE MATHS SHED ON A NIGHTLY BASIS TO PRACTICE THEIR MULTIPLICATION TABLES.

This can be found on Maths Shed. Click on Times Tables – your child can practice specific times tables that they do not know or attempt to improve their rapid recall by selecting Y4 MTC.

ON A FRIDAY WE WILL HAVE AN INDIVIDUAL WINNER FROM EACH CLASS FOR THE CHILD THAT HAS THE HIGHEST MATHS SHED SCORE AND A KS2 CLASS WINNER.

WE ARE SEARCHING FOR OUR KS2 MULTIPLICATION CHAMPION FOR KS2!



TOP CLASS = CLASS 2L
TOP SPELLER =
YUVAN SUNIL 2L

Spelling and Phonics Shed

Just a reminder that the Lunt's Heath PTA have funded a subscription for every child to not only Maths Shed but the platform which also includes Spelling and Phonics Shed.

During lockdown we have found that the children's spelling ability was greatly impacted as it was difficult to teach and test spellings virtually.

Spelling shed allows the children to practice their spellings for their age phase in a fun and interactive way through games.

Encourage your child to log into their account, select Spelling Shed or Phonics Shed. Choose their age phase and then they can choose the game type and level of challenge.

